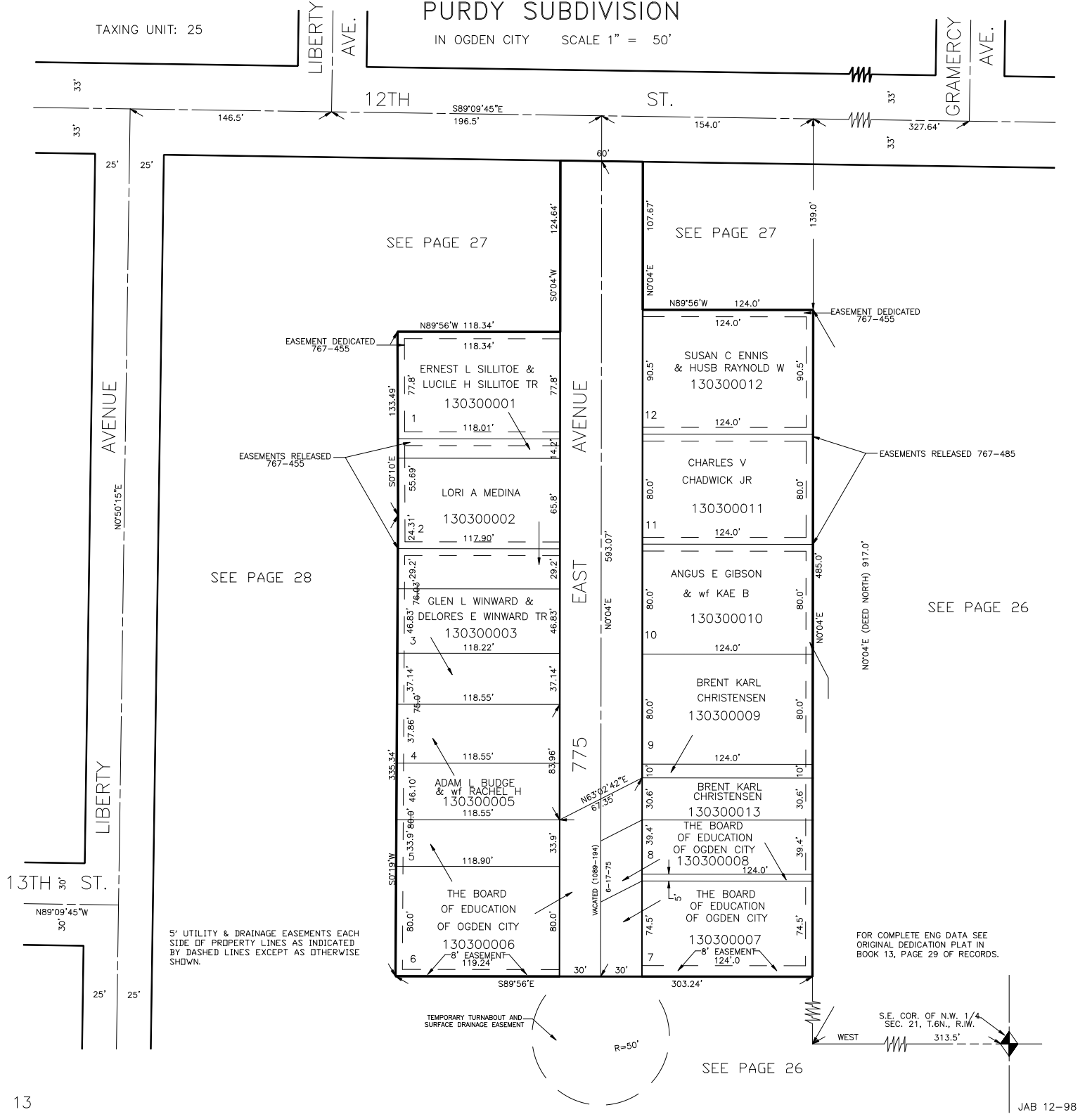


PART OF THE N.W. 1/4 OF SEC. 21, T.6N., R.1W., S.L.B. & M.

PURDY SUBDIVISION

IN OGDEN CITY SCALE 1" = 50'

TAXING UNIT: 25



13TH ST.

FOR COMPLETE ENG DATA SEE ORIGINAL DEDICATION PLAT IN BOOK 13, PAGE 29 OF RECORDS.

S.E. COR. OF N.W. 1/4 SEC. 21, T.6N., R.1W. 313.5'

SEE PAGE 26